

Folder Cleaner Training

Folder Cleaner_Training.zip



Folder Cleaner - Overview

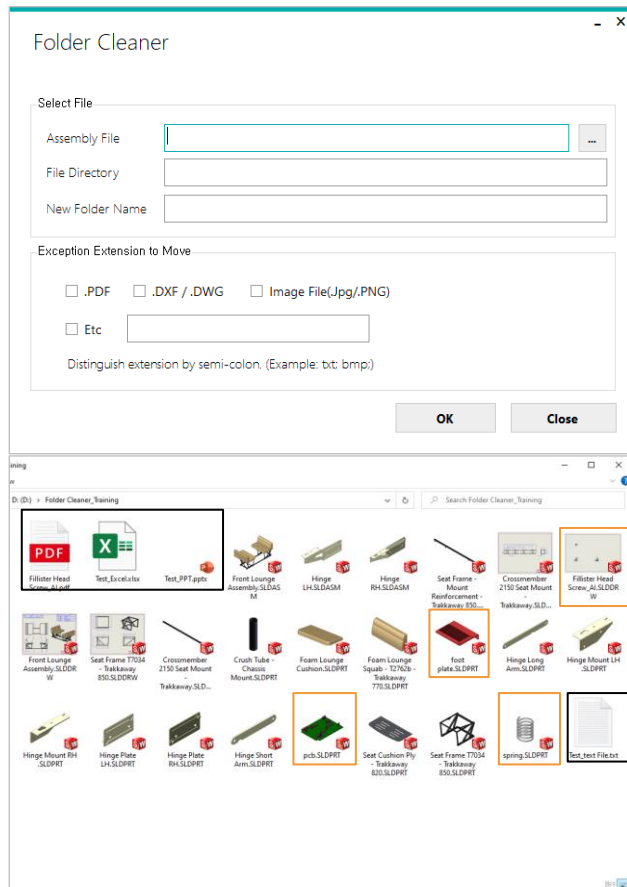
Work on the part with the red circle (1) following instructions by yourself.
The part with the black square (1) is an additional explanation or a reference.

Main Functions

- Clean the selected assembly file automatically
- Specify file extensions which are not moved to a new folder
- Move unreferenced files from the selected assembly to a new folder

Benefits

- Organizes legacy files easily when users create a final project file
- Easily identify the files needed for a similar project
- Prevents using rarely used files

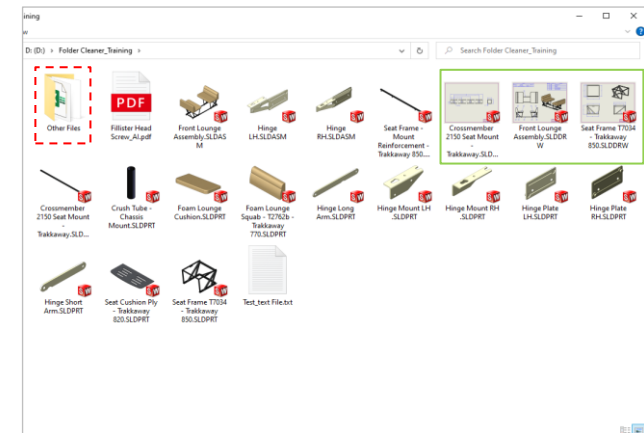


[Before]



Course Objective: Follow instructions through the course and learn how to use Folder Cleaner.

- ☐ Unrelated extensions with SOLIDWORKS
- ☐ Unrelated models and drawings with the selected assembly
- ☐ Subassembly drawings of the selected assembly
- ☐ File where unreferenced files are located



[After]

Folder Cleaner - Composition

Work on the part with the red circle (1) following instructions by yourself.
The part with the black square (1) is an additional explanation or a reference.

1 Execute **Front Lounge Assembly.SLDASM** file among example files. (Top-level Assembly)

2 Click **[SpeedWorks]tab – [Folder Cleaner]**.

3 A current assembly file is displayed.

Click [...] button to select another assembly.

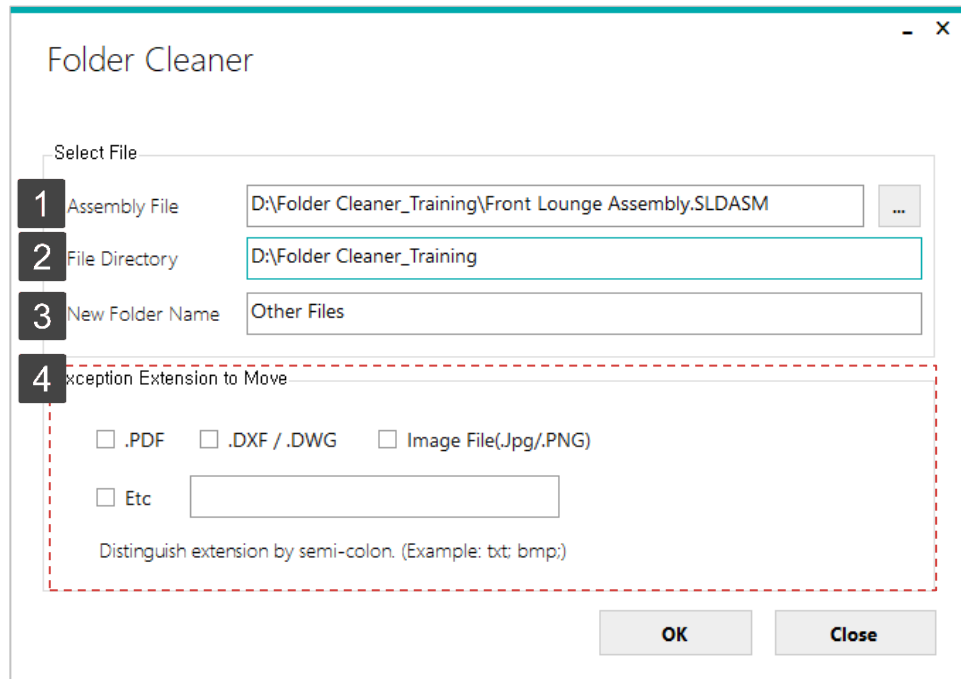
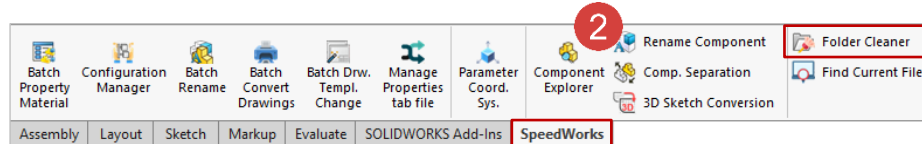
2 The file directory of the current assembly is displayed.

3 It is the name of the folder where unreferenced files will be relocated. (Editable)

4 Files having the extensions that a user has specified will not be moved even they are unreferenced.

※ You can download example files at Support page in SpeedWorks Homepage(<http://speedworks.info>).

Name	Date modified	Type	Size
Crossmember 2150 Seat Mount - Trakka...	8/15/2017 12:13 PM	SOLIDWORKS Dra...	115 KB
Crossmember 2150 Seat Mount - Trakka...	8/15/2017 12:00 PM	SOLIDWORKS Part...	97 KB
Crush Tube - Chassis Mount.SLDPR	8/15/2017 12:05 PM	SOLIDWORKS Part...	83 KB
Fillister Head Screw_AI.pdf	6/9/2020 3:51 PM	Microsoft Edge P...	101 KB
Fillister Head Screw_AI.SLDDRW	6/3/2020 5:17 PM	SOLIDWORKS Dra...	135 KB
foam Lounge Cushion.SLDPR	8/15/2017 12:05 PM	SOLIDWORKS Part...	191 KB
m Lounge Squab - T2762b - Trakka...	8/15/2017 12:06 PM	SOLIDWORKS Part...	314 KB
Seat plate.SLDPR	1/6/2021 10:57 AM	SOLIDWORKS Part...	551 KB
Front Lounge Assembly.SLDASM	8/16/2017 8:58 AM	SOLIDWORKS Ass...	634 KB
Front Lounge Assembly.SLDDRW	8/16/2017 9:04 AM	SOLIDWORKS Dra...	682 KB
Hinge LH.SLDASM	8/15/2017 12:06 PM	SOLIDWORKS Ass...	205 KB
Hinge Long Arm.SLDPR	8/15/2017 12:02 PM	SOLIDWORKS Part...	70 KB
Hinge Mount LH.SLDPR	8/15/2017 12:07 PM	SOLIDWORKS Part...	130 KB
Hinge Mount RH.SLDPR	8/15/2017 12:07 PM	SOLIDWORKS Part...	117 KB
Hinge Plate LH.SLDPR	8/15/2017 12:11 PM	SOLIDWORKS Part...	280 KB



Folder Cleaner - Configuration

Work on the part with the red circle (1) following instructions by yourself.
The part with the black square (1) is an additional explanation or a reference.

1 In this example, check **[.PDF]** not to move PDF documents.
(Check PDF to leave the exemplary PDF document in the folder.)

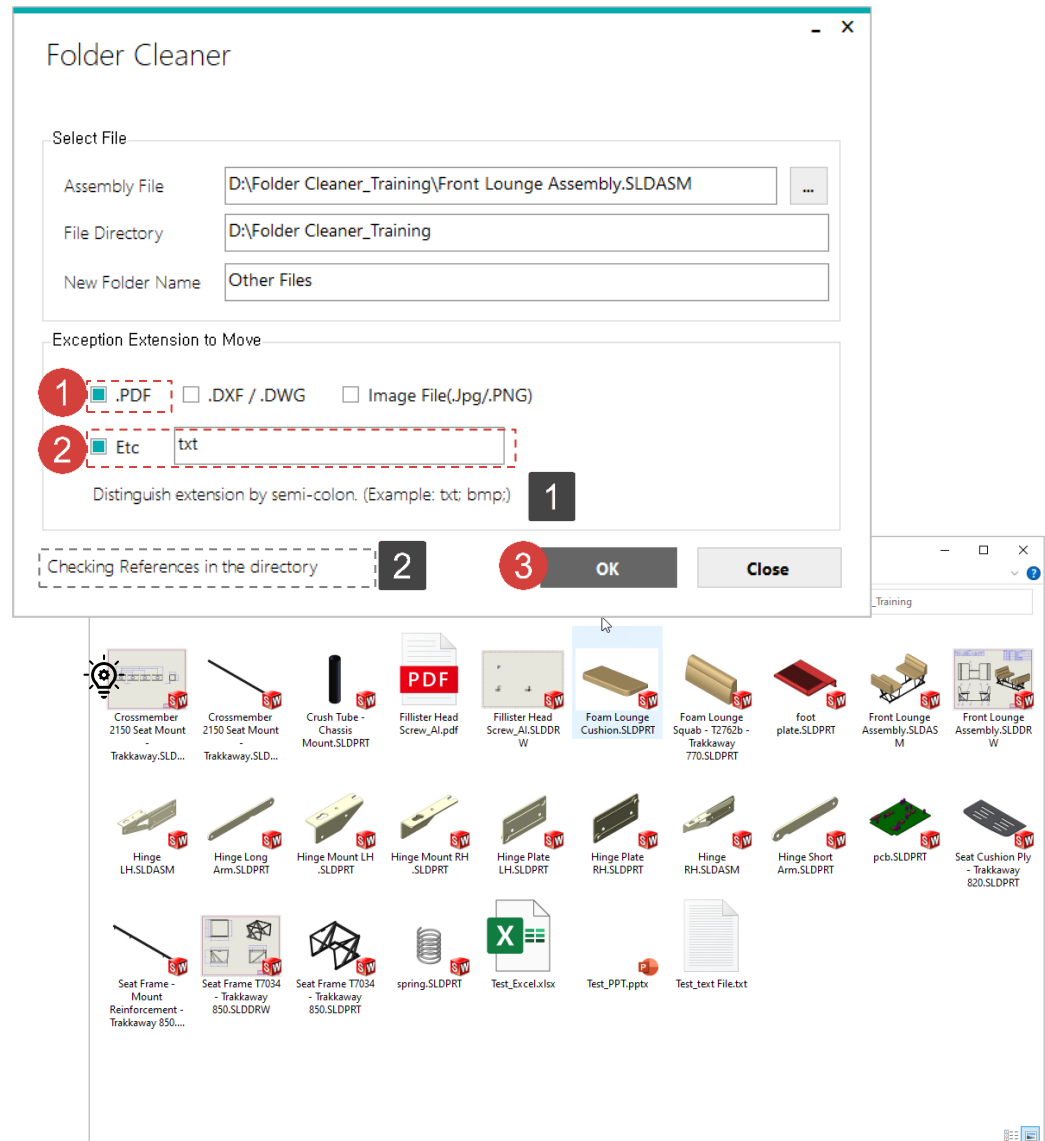
2 Check **[Etc]** and type **'txt'** at the box to exclude the txt files from being moved.

3 Click **[OK]** button.

1 Type **';'**(Semi-colon) between extensions to add multiple extensions at once.

2 The status will be displayed.

Drawings of the referenced files selected as an assembly are also regarded as having a reference relation to an assembly.

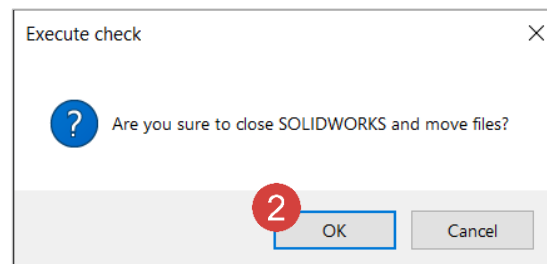
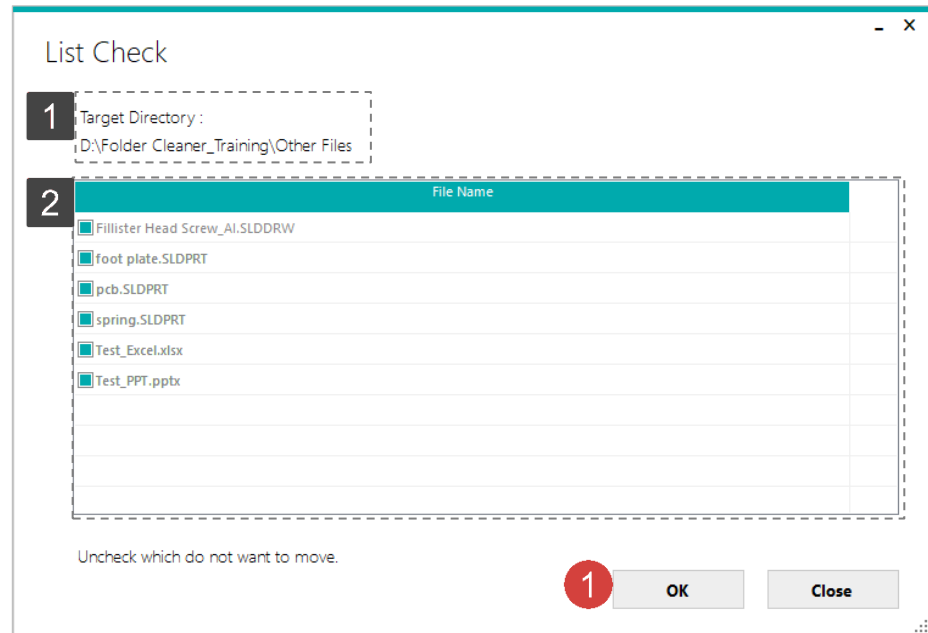


1 Review the list of files to be moved and the click [OK] button.

2 Click [OK] again at 'Execute Check' window to start cleaning the folder.

1 It is a file directory where specified files will be relocated.

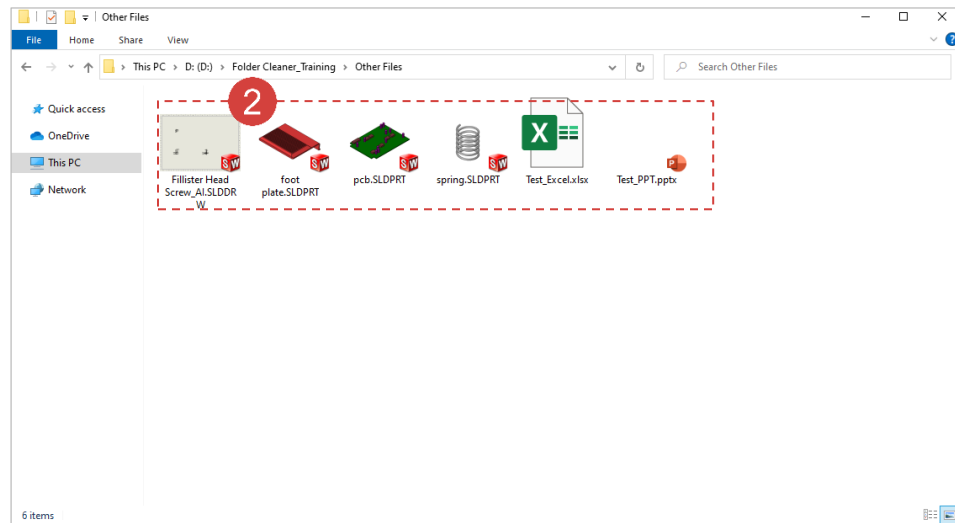
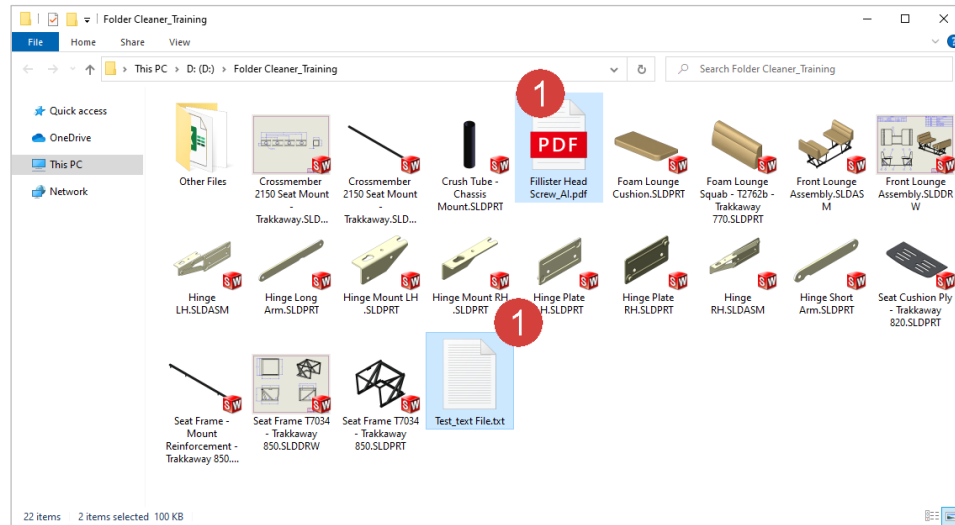
2 Look through the list (= the list of files that will be relocated to Target Directory) and uncheck files which users do not want to move.



Folder Cleaner - Check Result

1 Although the following files do not have reference relations to the selected assembly, they are left the current folder as specifying the files having following extensions, '.pdf' and '.txt', in previous step.

2 Files not having reference relations to the selected assembly file are moved to [Etc].



Work on the part with the red circle (1) following instructions by yourself.
The part with the black square (1) is an additional explanation or a reference.